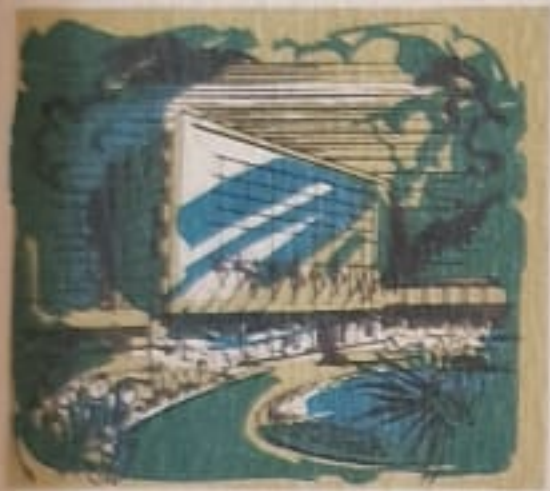




New Orleans Skyline—The International City



City Hall and Civic Center



NASA-Michoud Assembly Facility



World Famous Cuisine



The Nation's Second Port



Romantic Vieux Carré



Big League Sports City



The Mardi Gras



The Birthplace of Jazz

Greetings

Be it hereby known that

SYLVESTER WALCH

has on this 25th day of July 1974 been made an

Honorary Citizen of New Orleans The International City

founded 1718 A.D. by the French Explorer Bienville . . . a city of Old World tradition and New World enterprise famed for its charm, beauty and hospitality . . . one of America's most progressive communities . . . a great World Port and the center of a vast and growing industrial empire . . .

Moon Landrieu
MAYOR

James A. Moran
COUNCILMAN—DISTRICT A

Joseph W. DiPaola
COUNCILMAN AT LARGE

Peter A. Reus
COUNCILMAN—DISTRICT B

Eddie Sapir
COUNCILMAN—DISTRICT C

Clarence O. Dupuy Jr.
COUNCILMAN—DISTRICT D

John Landrieu
COUNCILMAN—DISTRICT E

Shelby C. Ciaccio
COUNCILMAN—DISTRICT F

